



2 independent motors

**12 vibration modes in
each shaft**

Sensual ridges

Flexible design

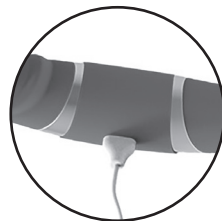
Made from silicone

Waterproof

Woo-Two

Power

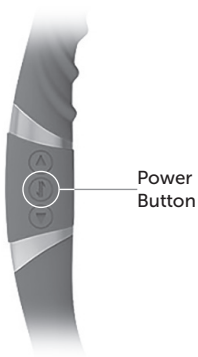
- For maximum pleasure charge before every use.
- Connect the included USB cable and insert the USB end into the wall adaptor or computer USB port (Computer must be turned on).
- The slow intermittent glow indicates charging in progress.
- A full charge takes up to 6 hours for 3,5 hours of play.



Magnetic
USB charging port

How To Use

- Hold the **⏻** button to turn on/off.
- Press the **▲** button quickly to cycle through 12 vibration modes for the first shaft.
- Press the **▼** button quickly to cycle through 12 vibration modes for the second shaft.



Power
Button

Cleaning and Care

- Use a toy cleaner/mild soap with water to clean the product before and after each use.
- Pat with a towel and allow it to air-dry completely.
- Use with the water-based lube only, no silicone lubricants.
- The item can be sterilized with a 5% bleach solution or alcohol.



Warning

- Do not use on inflamed and injured areas.
- Discontinue use if feeling pain or discomfort.
- Adult novelty only. Use for medical purposes or for a use that has an adverse effect on any function of the body is prohibited.

edenfantasy
THE NEW INTIMACY

www.edenfantasy.com

Customer Service 24/7
Phone: +1 (770) 604 - 1352